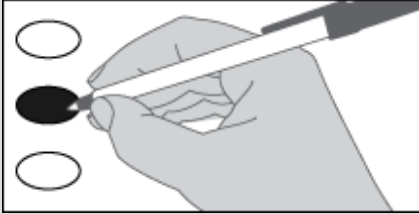


Sample Ballot
Special Election
Mason County, Washington
February 9, 2021

Sample Ballot

Instructions

How to vote

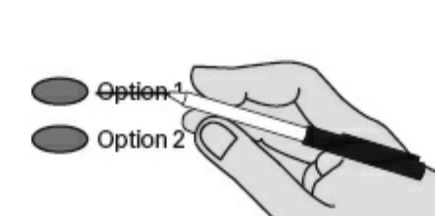


Use a black ink pen to completely, fill in the oval to the left of your choice.

Vote for only one.

If you vote for more than one, no votes will be counted for that race.

If you make a mistake



Draw a line through the entire response. Then you may make another choice.

For your safety and ours:

Please consider visiting our website, emailing or calling us with questions before coming to the office. Many things can be accomplished remotely.

Vote Center - New Entrance at Back of Building No. 1
Mason County Elections Department
411 N 5th St
Shelton, WA 98584
(360) 427-9670 ext. 470
elections@co.mason.wa.us

More information about measures, election results and other information is available at www.masoncountyelections.us

Open: Monday - Friday
9:00 a.m. - 4:00 p.m.

Election Day:
9:00 a.m. - 8:00 p.m.

To update your address contact our office or visit VoteWA.gov.



Start Voting Here

Fire

Fire Protection District No. 4 Emergency Medical Services Property Tax Levy

The Governing Board for Mason County Fire Protection District No. 4 adopted Resolution No. 192, concerning a proposition to finance maintenance and operation expenses. This proposition would authorize the District to levy taxes to fund emergency medical services for its citizens by renewing the levy of \$0.50 or less per \$1,000 of assessed valuation to be collected for six consecutive years beginning in 2022.

Should this proposition be approved?

- Levy...Yes
 Levy...No

Fire Protection District No. 13 Regular Property Tax Levy Renewal

The Board of Commissioners for Mason County Fire Protection District No. 13 adopted Resolution No. 299, concerning a proposition to finance maintenance and operation expenses. This proposition would authorize the District to levy taxes for the provisions of emergency medical services pursuant to RCW 84.52.069 in an amount not to exceed \$0.50 per \$1,000 of assessed valuation for each of six consecutive years beginning with levy year 2021 for collection in 2022.

Should this proposition be approved?

- Levy...Yes
 Levy...No

Thank you for returning your ballot no later than Tuesday, February 9, 2021.

Who donates to campaigns?

View contributors for measures at:

Public Disclosure Commission

www.pdc.wa.gov
Toll free (877) 601-2828

Sample