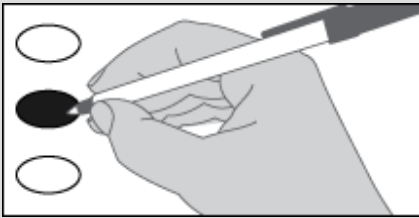


## Instructions

### How to vote

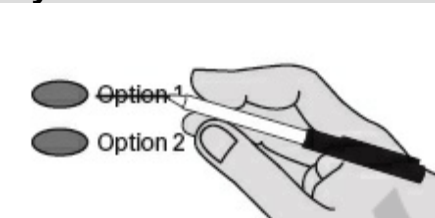


Use a black ink pen to completely, fill in the oval to the left of your choice.

### Vote for only one.

If you vote for more than one, no votes will be counted for that race.

### If you make a mistake



Draw a line through the entire response. Then you may make another choice.

### For your safety and ours:

Please consider visiting our website, emailing or calling us with questions before coming to the office. Many things can be accomplished remotely.

### Vote Center - New Entrance at Back of Building No. 1 Mason County Elections Department

411 N 5th St  
Shelton, WA 98584  
(360) 427-9670 ext. 470  
elections@co.mason.wa.us

More information about measures, election results and other information is available at [www.masoncountyelections.us](http://www.masoncountyelections.us)

**Open: Monday - Friday**  
9:00 a.m. - 4:00 p.m.

**Election Day:**  
9:00 a.m. - 8:00 p.m.

To update your address contact our office or visit [VoteWA.gov](http://VoteWA.gov).

### Who donates to campaigns?

View contributors for measures at:

### Public Disclosure Commission

[www.pdc.wa.gov](http://www.pdc.wa.gov)  
Toll free (877) 601-2828



## Start Voting Here

### Fire

#### Fire Protection District No. 3 Proposition For Property Tax Levy Lid Lift

The Board of Fire Commissioners of Mason County Fire Protection District No. 3 adopted Resolution No. 2021-01, concerning a proposition to finance current operation and maintenance expenses. This proposition would authorize the District to impose a regular property tax levy at \$1.33 per \$1,000 of assessed valuation for 2021 and thereafter subject to any otherwise applicable statutory dollar rate limitations. The dollar amount of this levy would be used for the purpose of computing the limitations for subsequent levies under RCW 84.55.050.

Should this proposition be approved?

- Levy...Yes  
 Levy...No

#### Fire Protection District No. 5 DBA Central Mason Fire and EMS Emergency Medical Services Regular Property Levy

The Board of Fire Commissioners of Mason County Fire Protection District No. 5, DBA Central Mason Fire and EMS, adopted Resolution No. 376 concerning a proposition to replace its expiring emergency medical services property tax levy. This proposition would authorize the board of commissioners to continue to fund emergency medical services for its citizens by imposing a regular property tax levy of \$.50 per \$1,000 of assessed valuation for a period of six consecutive years to be collected beginning in 2022.

Should this proposition be approved?

- Levy...Yes  
 Levy...No

#### Fire Protection District No. 16 Proposition For Annexation

The Board of Commissioners of Mason County Fire Protection District No. 16 adopted Resolution No. 21-004, concerning a proposition to annex property into the District. This proposition would annex the property described in Resolution No. 21-004 into Mason County Fire Protection District No. 16.

Should this annexation be?

- Approved  
 Rejected

**Thank you for returning your ballot no later than Tuesday, April 27, 2021.**

Sample