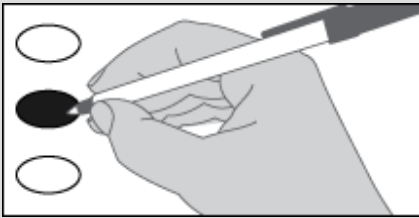


Sample Ballot  
Primary Election  
Mason County, Washington  
August 3, 2021

Sample Ballot

## Instructions

### How to vote

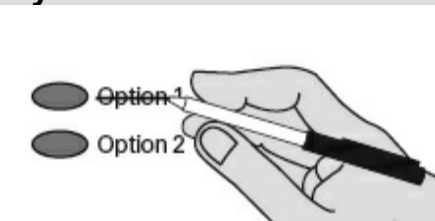


Use a black ink pen to completely, fill in the oval to the left of your choice.

### Vote for only one.

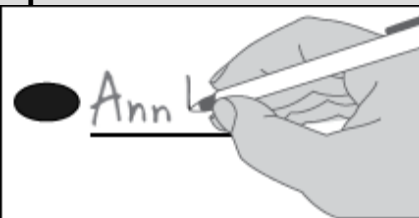
If you vote for more than one, no votes will be counted for that race.

### If you make a mistake



Draw a line through the entire candidate's name. Then you may make another choice.

### Optional write-in



To vote for a candidate not listed, fill in the oval to the left of the blank line and print the name of the candidate.

Please consider visiting our website, emailing or calling us with questions, many things can be accomplished remotely.

### Vote Center - New Entrance at Back of Building No. 1 Mason County Elections Department

411 N 5th St  
Shelton, WA 98584  
(360) 427-9670 ext. 470  
elections@co.mason.wa.us

More information about candidates, election results and other information is available at [www.masoncountyelections.us](http://www.masoncountyelections.us)

**Open: Monday - Friday**  
9:00 a.m. - 4:00 p.m.

**Election Day:**  
9:00 a.m. - 8:00 p.m.

To update your address contact our office or visit [VoteWA.gov](http://VoteWA.gov).

In each race, you may vote for any one candidate listed. The two candidates who receive the most votes in the Primary Election will advance to the General Election.

### Who donates to campaigns?

View contributors for measures at:

### Public Disclosure Commission

[www.pdc.wa.gov](http://www.pdc.wa.gov)  
Toll free (877) 601-2828



## Start Voting Here

### Nonpartisan Office

#### City

City of Shelton  
Council Member No. 7  
4 Year Short and Full Term

- Trenton Powers
- George W. Blush
- Miguel Gutierrez
- 

#### School

Pioneer School District No. 402  
Director Position No. 3

- Shawn Montano
- Stephanie Schlitz
- Robert B. Clark
- 

Thank you for returning your ballot no later than Tuesday, August 3, 2021.

### Ballot Drop Boxes are Safe and Secure.

Ballots are collected regularly by two election employees.

### Ballot Drop Box Locations

**Allyn** - Port of Allyn Building  
18560 E State Route 3, Allyn

**Grapeview** - Horton Community Center  
4350 Grapeview Loop Rd, Grapeview

**Shelton** - Mason County Offices, Building 1  
411 N 5th St., Shelton - **Drive-thru in alley**

### New Location!

**Shelton** - Shelton Family YMCA  
3101 N Shelton Springs Rd, Shelton - **Drive-thru**

There is not longer a ballot drop box at the Shelton Timberland Regional Library.

Sample